

**FLOW CHART FOR EDUCATION CODE BENEFITS**

**§§44830-45197 as of 2017**

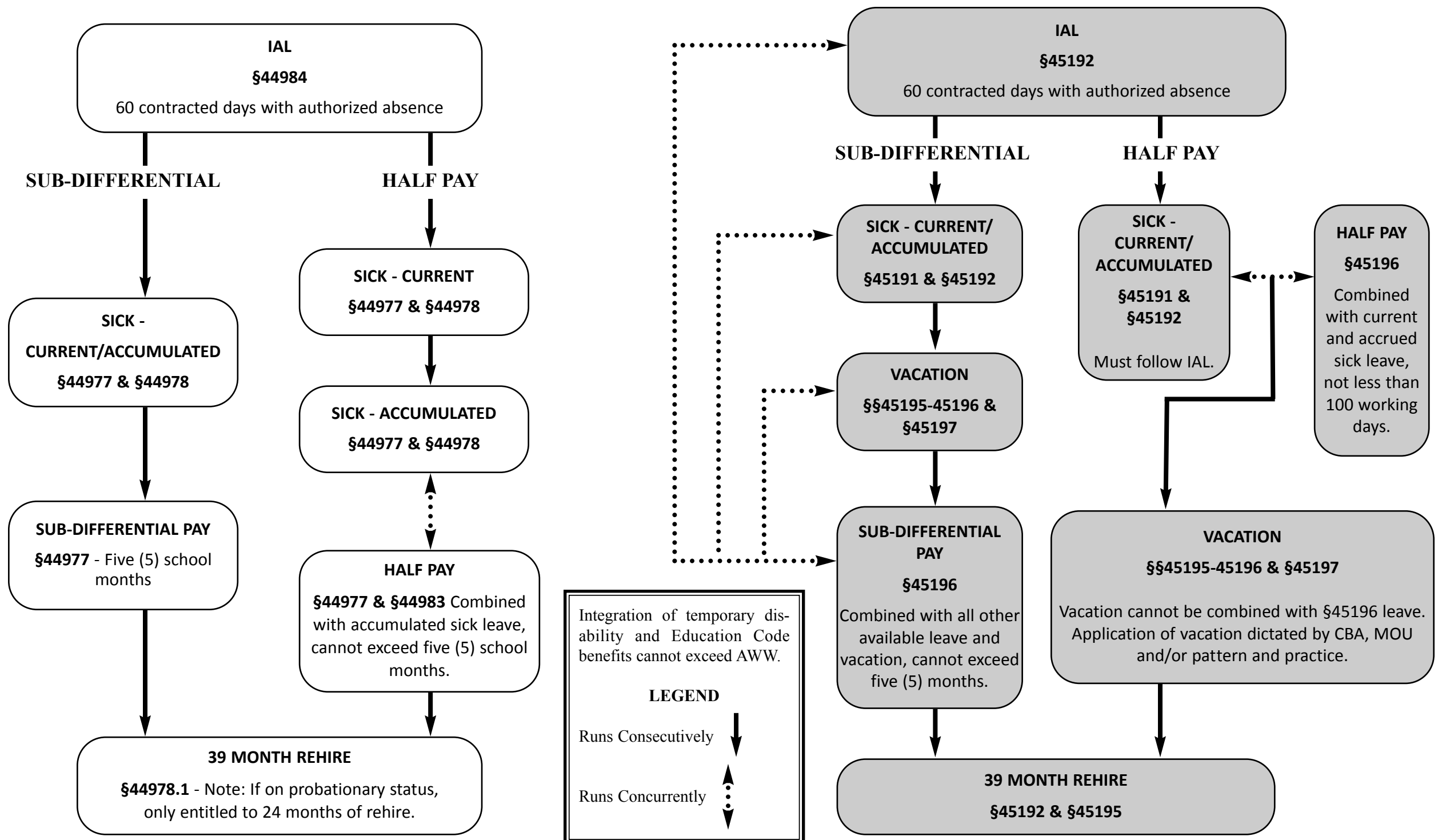
*Always consult your CBA, MOU and past practices as well as the Education Code.*

**CERTIFICATED EMPLOYEES**

**§§44830 et seq** - Holds a credential, certificate, etc., and is employed in a position for which the Education Code requires said qualification.

**CLASSIFIED EMPLOYEES**

**§§45104 et seq** - Employed in non-certificated position.



Integration of temporary disability and Education Code benefits cannot exceed AWW.

**LEGEND**

Runs Consecutively ↓

Runs Concurrently ⇕

- Anaheim (714) 385-9400
- Fresno (559) 431-4900
- Oakland (510) 628-0496
- Pasadena (626) 568-9700
- Redding (530) 222-0268
- Sacramento (916) 441-6045
- San Bernardino (909) 890-2265
- San Diego (619) 233-9898
- San Francisco (415) 781-6676
- San Jose (408) 286-8801
- Santa Monica (310) 392-8101